

T-01 Woven Wall Mirror
Tuesday 1:00-5:00
\$56

Intermediate

4 hours

Sandy Atkinson



11 inch Diameter x 4.5 inches High

This 20" diameter wall mirror can be the center of attraction for any wall. Woven on a wooded drilled base with a 13 1/2" mirror attached, the framework is completely twined with round reed. Bi-spokes are added for strength. Two braids one inside around the mirror which hides the edge and the second to finish off the outside border are worked. Both braids are the same which is good for skill building, as this is an intermediate braid and usually takes practice to perfect the braid. A sawtooth hook is attached to the back of the frame for hanging. **20" D with 13 1/2" mirror**

T-02 Nantucket Pencil Cup
Tuesday 1:00-5:00
\$45

Beginner

4 hours

Candy Barnes



Students will insert tapered staves in a poplar wood base and will weave with cane over a wire mesh pencil cup holder, students will have options of colors and patterns . A poplar rim will be glued on.

Teacher provides all the tools needed. **4" H X 4" W**

T-03 Saving Trees
Tuesday 1:00-5:00
\$53

All Levels

4 hours

Pat Mercer



This basket is woven on a unique 9" X 6" base. The back is woven straight up to hang flat against a wall while the front is slightly rounded. The body of the basket is a start/stop weave. Twining, a lashed rim, and a seagrass hanger are techniques also used. The stylized tree embellishments are done last. **6" x 9" x 13 1/2"**

T-04 A Seaside Christmas
Tuesday 1:00-9:00
\$70

All Levels 6 hours

Pam Milat



This seaside beauty is woven on a D-handle with natural and dyed spokes. The basket is completed with the over/under and twining techniques then finished with a wrapped handle and a grouping of like colored snowflake embellishment. **8" diameter x 8" H w/Handle (basket is 4"H)**

T-05 Elegant Potbelly Basket
Tuesday 1:00-9:00
\$85

Beginner/Intermediate 6 hours

Kathy Petronzio



This wonderful potbelly design is woven over a custom puzzle mold for class use. The base rims and lid are cherry. The weaving is Hamburg cane and waxed linen. I enjoyed designing this elegant potbelly.
5.5" x 4.5" diameter

T-06 Go Go Basket
Tuesday 1:00-5:00
\$45

Beginner

4 hours

Mary Price



Woven on a 6x10 D handle, this functional wall basket is designed to dispense pet waste bags. The basket portion can be used to store leashes, treats or favorite toys. Techniques include: how to set up a suspended base spoke, start / stop weaving, placing spoke overlays, how to incorporate "buttons" and a dog buckle to rows of weaving. **6 x 4 x 10H**

T-07 Love Honor and Respect
Tuesday 1:00-9:00
\$55

Beginner

6 hours

Lorelea Roberts



In this class, you'll explore:

Twined Weaving: Learn the art of twining, a technique that gives the basket its distinct texture.

Color Play: Discover how to incorporate contrasting colors of reed to represent different layers of meaning, with dark and light accents symbolizing harmony and balance. **Embellished Rim:** Master the intricacies of weaving a braided

rim, representing the interconnectedness of relationships built on love and respect.

8 x 8 base ~ 10 diameter

T-8 Rambler Tote
Tuesday 1:00-5:00
Wednesday 8:30-5:30
\$100

Intermediate

12 hours

Jamie VanOekel



Start with a slotted base, add stakes and overlays as you weave. 3 rod wale and more overlays create the distinctive decorative band. Add leather handles and you have a great tote to take on the road! It is big so bring your patience! Special tools: spoke weight. **14"H x 8" W x 18" L**

This is a two day class starting Tuesday and completing on Wednesday.

W-09 Cowbell Basket
Wednesday 8:30-5:30
\$70

Intermediate

8 hours

Sandy Atkinson



The Cowbell Basket is also referred to as the Apple Gathering or Garden Basket. Folklore says this basket was run with the pickers, on top of a ladder, needed the basket emptied. Fellow weavers have shared the story of the Garden Basket. When children were sent to the garden to pick, mother had better hear the bell ring occasionally or she would need to check to make sure they had not run off to play! The basket has 3 bottoms, making it very sturdy. The inside is mounded up so apples, veggies will not bruise. The bell is sandwiched between the inside and outside bottoms. **8 1/2 D at top X 11" H X 15 1/4" H with handles.**

W-10 Nantucket Clock
Wednesday 8:30-5:30
\$95

Intermediate

8 hours

Candy Barnes



Students will insert tapered staves in a cherry base and will weave with cane over a class mold. A cherry rim will be glued on. Included is a custom-made base with engraved numbers that will be painted by students in class. A quartz clock movement will be installed after finishing. **9 3/4" X W 2 1/2" H**

Teacher provides all the tools needed.

W-11 Shaker Music Box #3
Wednesday 8:30-3:30
Thursday 8:30-12:30
\$75

Beginner

10 hours over two days

Dave Barnes



Students will build a Cherry Music Box, learning steaming and bending techniques, along with using the following power tools; drill press, power sander, steam box, and hammer, which all will be provided by the teacher. The musical mechanism is provided. Will need a pencil and sharp non-folding utility knife with a new blade. **7" X 5"**

This is a two day class starting Wednesday and completing on Thursday.

W-12 Floral Rice Paper Pine Needle **Beginner**
Wednesday 8:30-5:30
\$50

8 hours

Lori McCoy



This floral designed pine needle basket uses 2 colors of threads. The stitches used are the VC stitch and the simple stitch. The participant will learn how to incorporate beads towards the top edge of the project. Special tools: scissors. **6" in diameter 1 1/2' high**

W-13 Frayed Knot Market Basket
Wednesday 8:30-5:30
\$72

Intermediate

8 hours

Pat Mercer



This market basket begins on a Williamsburg handle with a solid 7" x 17" woven base. Seagrass and torn strips of denim enhance the country charm of this large basket. An easy, but eye-catching, running stitch decorative rim caps off design elements of twining, turn-backs, X's, and triple-twined arrows. The wrapped handle completes the look. Participants may bring their favorite old jeans if they would like to add pieces to personalize their basket. **19 ½ x 13 ½ x 8 ½ without handle**

W-14 Scalloped Cat
Wednesday 8:30-5:30
\$90

Advanced

8 hours

Pam Milat



Woven on an 8" square hoop, this elegant all natural cathead market basket is sure to impress. Students will be challenged to maintain the cathead ears while weaving around their handle. The basket is finished with a wrapped handle and a beautiful scalloped braided rim. **18"L x 8.5"W x 10"H**

W-15 Large Weekender Tote
Wednesday 8:30-5:30
\$85

Intermediate

8 hours

Kathy Petronzio



This large Tote is perfect for a weekend adventure. This basket is woven with reed and the center overlay is Hamburg cane. There are beads under the rim and are optional. The rim is the same leather as the handle and is lashed with waxed linen. **14" x 15" x 6" with handle 24"**

W-16 Crater Lake
Wednesday 8:30-5:30
\$89

Intermediate

8 hours

Mary Price



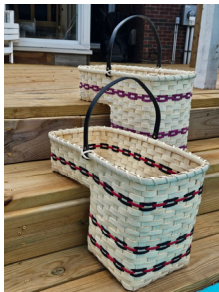
This Royal Blue basket was inspired by a visit to Crater Lake National Park, where the water's deep blue color was mesmerizing. This basket mirrors that stunning shade woven using a slotted wood base, spokes, and weavers, all in royal blue. Learn triple twine with a step up and how to transition from the solid blue bottom half to the natural reed of the top half with overlay techniques. Final embellishments feature blue leather handles attached to a blanket-stitched rim and two rows of Cherokee wheels added to the finished basket. Special tools: a small piece of fine sandpaper and a sponge. **15 x 7 x 8 H**

W-17 Stairway to Heaven
Wednesday 8:30-5:30
\$78

Beginner

8 hours

Lorelea Roberts



A stair step basket is the perfect solution for keeping your staircase clutter-free while making it easy to transport items up and down. A leather handle provides an easy grip to take your basket up and down.
14 x 14 x 11.5

Th-18 Beaver Dam
Thursday 8:30-5:30
\$75

Intermediate 8 hours

Sandy Atkinson



A new pattern, woven on a cut blue stained and varnished pine base, with drilled holes for round reed spokes and bi spokes. Weaving includes 4 rod wale, twilled sides, diagonal weaves, incorporating four colors of blue, teal, sand, green shades. Top braid holds the handle which is an actual Beaver Stick, with one end chewed by the beavers from the UP of Michigan. **13" X 8" X 8 1/2" H at handle top**

Th-19 Nantucket French Bread
Thursday 8:30-5:30
\$110

Intermediate

8 hours

Candy Barnes



Students will insert tapered staves in a cherry base and will weave with cane over a class mold. Students will have the options of twills or color accents. A custom cherry rim will be glued on.
20 3/4 L X 3 3/4" W x 6" H

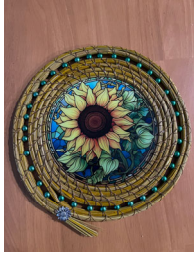
Teacher provides all the tools needed.

Th-20 Pine Needle SunCatcher
Thursday 8:30-5:30
\$50

Intermediate

6 hours

Lori McCoy



The weaver will be able to choose from several designs . I will offer Sunflower, hummingbird, dragonfly and Tree of life designs. The piece will use the simple stitch and include a row of coordinating beads. A charm will be added as well as a loop on the back for hanging. These pieces are approx. 9" in diameter. Special tools: scissors **9" in diameter**

Th-21 Over the Waves
Thursday 8:30-5:30
\$63

Intermediate/Advanced

8 hours

Pat Mercer



Starting on an 8" round wooden base, this basket showcases wave weaving with macrame cord, twilling, twining, triple twining, and a rolled matchstick rim. Several choices of macrame cord colors will be available. **9 1/2"-10" diameter; 9" tall**

Th-22 Hi & Dri
Thursday 8:30-5:30
\$62

Intermediate

8 hours

Pam Milat



To start, students will weave a simple 9" x 9" open weave based basket. The challenges begin with making and wrapping the handle, and then embellishing the sides with Cherokee wheels. Finally, wood feet will be inserted at the corners. Some color choices will be available at class time. Special tools: needle nose pliers. **9"L x 9"W x 10.5"H w/Handle**

Th-23 Blueberry Hill Wall Basket
Thursday 8:30-5:30
\$75

Intermediate

8 hours

Kathy Petronzio



This wonderful door basket is woven with reed and Hamburg cane. There is a slotted maple base and dyed round reed for the Gretchen border. The bottom is woven in a 2/2 twill. A leather hanger and 3 lamp glass blueberries complete the look. **8" x 10" x 4"**

Th-24 Pagoda
Thursday 8:30-5:30
\$58

Intermediate

8 hours

Mary Price



the lid

This lidded Pagoda basket features a 5" woven Cathead base. The basket and lid are accented with grey reed, flat silver wire, and 2 silver hoops serving as handles on the basket. The sides are woven in traditional start stop rows with a special emphasis on shaping to achieve the unique Cathead shape. After finishing with a traditional lashed rim, a round reed woven ledge is added. The lid is woven using Triple Twine and 4 Rod Wale to suit the size of your basket. **7 D x 7 H including**

Th-25 Holographic Stool
Thursday 8:30-5:30
\$59

Beginner

8 hours

Lorelea Roberts



Elevate your home decor with our HoloLace Hand Woven Stool. This stunning stool combines traditional chair caning techniques with holographic lace, creating a one-of-a-kind piece that's both functional and visually captivating. **14 x 11**

Th-26 Barn Door Wall Basket **Beginner/Intermediate**
Thursday 8:30-5:30
\$50

8 hours

Jamie VanOekel



Four techniques are incorporated in the creation of this decorative basket. Gently flare sides then add 3 rod wale and overlays. The handle is wrapped to add strength. Other color options will be available at the time of class. **13"H (w/out handle) x 8"L x 6" W**

F-27 Lake Michigan
Friday 8:30-5:30
\$78

Intermediate

8 hours

Sandy Atkinson



The third in a series of the Great Lakes Baskets, this one is woven on a raw edge oval plank drilled to accept the round reed. Triple twined with dyed reed changing colors, secures the base, then a over one, under one with a jump weave goes up the sides, along with more twining. The top braid is a little more difficult, but a great braid to learn. Colors of the basket are sand, light blue, navy blue, teal, creating the inland lake water colors. Also included in the class is rock wrapping on an actual rock from Lake Michigan. Rocks will vary in size and shape. **base 13" L X 10" W X 6 H bases will vary in size.**

F-28 Nantucket Desk Organizer
Friday 8:30-5:30
\$75

Intermediate

8 hours

Candy Barnes



Students will insert tapered staves in a cherry wood base and will weave over an acrylic 3 slot holder that can hold pencils, pens or brushes. A custom cherry wood rim will be glued on. Students will have a choice of being creative with color and patterns. Teacher provides all the tools needed.
8 1/4" L X 3" W X 5"H

F-29 Shaker Tool Caddy
Friday 8:30-3:30
Saturday 8:30-12:30
\$125

Beginner

10 hours over two days

Dave Barnes



Students will build a Shaker Tool Basket, learning steaming and bending techniques, along with using the following power tools; drill press, power sander, steam box, and hammer, which all will be provided by the teacher. Will need a pencil and sharp non-folding utility knife with a new blade.
12 3/4" L X 8 3/4" W, 35 1/2" D X 3 3/4 H

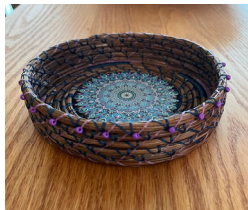
This is a two day class starting Friday and completing on Saturday.

F-30 Mandala Pine Needle Basket
Friday 8:30-5:30
\$50

Beginner

8 hours

Lori McCoy



This pine needle basket has a beautiful mandala design that is resin and backed on a circular wood disc. It incorporates 2 colors of wax sinew and a row of beads on the top row. The V stitch and the spiral fern stitch. Special tools: scissors. **6 1/2 " in diameter, 1 1/2" high**

F-31 Optics Gathering Basket
Friday 8:30-3:30
\$59

Intermediate/Advanced

6 hours

Pat Mercer



“Optics” begins with a unique woven base technique, giving it a 3-D effect. The wrapped handle highlights the inside and outside walls, and the winking God’s eye on each side contributes to the “optics” theme.
14” x 7” x 4 1/2 “ without handle

F-32 Teally
Friday 8:30-5:30
\$72

All Levels **8 hours**

Pam Milat



A teal/brown double walled reed basket with a two-toned woven twill base. Students will use the over/under and triple twine techniques to complete the inside and outside walls, then finish with a pair of matching leather handles on a single lashed rim.
11"L x 7"W x 6"H

F-33 Bread Basket with Acorn Feet
Friday 8:30-5:30
\$80

Intermediate **8 hours** **Kathy Petronzio**



This unique bread basket is very long and narrow, perfect for a baguette. The base is a unique piece of spalted maple. Reed is used for spokes and weavers. There is a different arrow design in the center that is woven with dyed Hamburg cane. The feet are bronze acorns.
15" x 4" x 6" tall

F-34 Ally-Oop
Friday 8:30-5:30
\$90

Intermediate

8 hours

Mary Price



This square to round basket is woven on a pre-stained square wood base with attached glazed pottery knobs as feet. Students will learn how to: Triple twine with a step up, add spoke overlays, create 2 directional reed loops around bead embellishments, and finish with an open handle lashed rim.
10 Diameter x 10 H

F-35 Beginning Pine Needle Basket **Beginner**
Friday 8:30-5:30
\$60

8 hours

Lorelea Roberts



Learn the art of pine needle basket weaving in this hands-on class! You'll create a beautiful, rustic basket featuring a customizable ceramic center and waxed linen thread in your choice of colors. Perfect for beginners and seasoned weavers alike, this class will guide you through the process of coiling and stitching pine needles to form a unique, nature-inspired basket. By the end, you'll have a stunning finished piece that combines natural materials with a personal artistic touch. **5-6 inches**

F-36 Handy Quad Swirl
Friday 8:30-5:30
\$50

Beginner/Intermediate

8 hours

Jamie VanOekel



Add stakes to a slotted base and work on shaping as you use continuous weave to create your swirl. Finish the handy carrier using waxed linen to secure the rim. Other color options will be available at the time of class. **7" H x 8" D**

S-37 Hexagon Stud
Saturday 8:30-3:30
\$75

Intermediate

6 hours

Sandy Atkinson



The unique base of this basket is a hexagon (6 sided) shape. Woven in medium oak, natural and blue or green dyed reeds for side color accents. Studs create stunning accents along with the swing handles. The studs are optional as they do take hand strength to insert. **15" L X 7 3/4" W X 7" height w/o handles with handles 13"**

S-38 Nantucket Jewelry/Candy
Saturday 8:30-3:30
\$85

Beginner

6 hours

Candy Barnes



Students will insert tapered staves in a cherry wood base and will weave with cane over a class mold. A cherry rim will be glued on, and a cherry lid and knob will be included. Students will have an option to be creative with color and patterns. **5 1/2" W 3 1/2" H**
Teacher provides all the tools needed.

S-39 Pine Needle Bracelets
Saturday 8:30-3:30
\$35

Beginner

6 hours

Lori McCoy



The pine needle bracelet will be available in 2 sizes. The core is a stainless ring. The student will learn how to wrap the core piece and then use the simple stitch on either side. They will be able to add beads and a charm as a finishing detail.
Special tools: scissors. **3"-4" in diameter (2 sizes for bracelets)**

S-40 Welcome Summer Vase
Saturday 8:30-10:30
\$30

All Levels

2 hours

Pat Mercer



Students will select the size and shape of their glass vase already attached to a drilled base. This quick weave and simple braid allow time to make and dye the flowers in class.
6 1/2" x 9"

S-41 Shades
Saturday 8:30-3:30
\$68

Intermediate

6 hours

Pam Milat



Woven on a D-handle, students will complete a twined round-based cylinder in natural reed. Then they will transform plain to artistic wonder with curls of dyed maple, creating a beautiful flow of color. Some color choices at class time.
6.5" diameter x 10" H w/Handle

S-42 Blue and White Japanese Bowl
Saturday 8:30-3:30
\$65

Beginner

6 hours

Kathy Petronzio



This lovely basket is woven over a ceramic Japanese Bowl. There is a slotted maple base and is woven with Hamburg cane. Waxed linen is used to lash your navy blue rim. A nantucket style technique will be taught in this class. **6" diameter x 5" tall**

S-43 Farmhouse Chic
8:30-12:30
\$49

Beginner

4 hours

Mary Price



This chic basket starts with inserting reed spokes into a round wood base. Students will learn basic twining, over under weave, triple twine with a step up, weaving with metal ribbon, and how to create a triple twined lashed rim. The completed basket is finished with the addition of sparkly rhinestones and silver metallic painted wood feet. **8 Diameter x 4.5 H**

S-44 Step In Style
Saturday 8:30-5:30
\$75

Intermediate

8 hours

Lorelea Roberts



You will learn to weave a beautiful double-wall basket! The "Step-in-Style" basket is a stunning combination of traditional techniques and a modern, geometric design. This basket features a striking Dyed-and-natural pattern on the base, which creates a bold, eye-catching contrast. In this class, you'll explore the skills needed to create both the inner and outer walls of the basket, as well as master the unique zigzag base pattern that sets this design apart. **7.5 X 10**

S-45 Fall Back
Saturday 8:30-12:30
\$25

Beginner

4 hours

Jamie VanOekel



Use overlays, wrapped handles and double lashing to create a fun basket perfect for gift giving. A second color choice will be offered at class time. **7"L x 5 1/2" W x 3"H**

S-46 2 Quart Canister
Saturday 10:45-12:45
\$25

Beginner

2 hours

Pat Mercer



This is not only a great beginner project but also a fun break for experienced weavers. Everything about this contributes to a quick weave and proud accomplishment. Beginning with a template for the slotted wooden base, students will continuously weave around a 2-quart plastic food-grade canister, selecting an over/under weave or a 2-1 twill. The project is finished off in twining. Students may elect to top it off with a provided embellishment. **2 quarts**
Please choose paw print, dog bone or cookie embellishment.

S-47 Lazy Susan
Saturday 1:30-5:30
\$49

Beginner

4 hours

Mary Price



The allure of a spinning basket is undeniable! As it spins, the woven rows create a captivating illusion of waves moving up & down. Beginning with a 10-inch round Lazy Susan base, students will master the fundamental over-under start-stop weave, complemented by a rickrack overlay design, and finished with a simple lashed rim. A variety of dyed reed colors will be offered during the class. Take this class for a spin – you won't regret it! Special tools: small awl. **11 inch Diameter x 4.5 inches High**