

## Schedule of Events

### Monday, June 11

4:00 Registration begins  
5:30-6:00 Dinner served

### Tuesday, June 12

10:00-10:45 Brunch Buffet served  
11:00-5:00 Registration & refreshments  
1:00-5:00 Classes  
5:30-6:00 Dinner served  
7:00-11:00 Classes

### Wednesday, June 13

7:00-7:30 Breakfast served  
8:00-Noon Classes  
Noon-12:30 Lunch served  
1:00-5:00 Classes  
5:30-6:00 Dinner served  
7:00-11:00 Classes  
9:00 Popcorn in Lobby

### Thursday, June 14

7:00-7:30 Breakfast served  
8:00-Noon Classes  
Noon-12:30 Lunch served  
1:00-5:00 Classes  
5:30-6:00 Dinner served  
7:00-9:00 Teacher Marketplace  
9:00 Popcorn in Lobby

### Friday, June 15

7:00-7:30 Breakfast served  
8:00-Noon Classes  
Noon-12:30 Lunch served  
1:00-5:00 Classes  
5:30-6:00 Dinner served  
7:00-11:00 Classes  
9:00 Popcorn in Lobby

### Saturday, June 16

7:00-7:30 Breakfast served  
8:00-Noon Classes  
Noon-12:30 Lunch served  
1:00-5:00 Classes  
5:30-6:00 Dinner served

## Please read instructions carefully before preparing your Registration Form

There is a **\$35 NON-REFUNDABLE registration fee**. Please make this check payable to Bluegrass Area Basketmakers Seminar and enclose it with your registration form along with a **long, self-addressed, stamped envelope**.

NO youth under the age of 14 years may attend.

Read the class descriptions carefully and be aware of **weaving level, length of class, class price** and any **special tools** needed to complete the basket. Some classes encompass several hours on two days. Be careful not to double book your time slots. Fill in your registration form completely. ALL information requested must be filled out legibly to insure your registration is not confused with someone else and so that we can contact you if a question arises.

When you fill in your class requests please make sure the numbers of your classes are legible and that you have listed 2<sup>nd</sup> and 3<sup>rd</sup> choices in case your 1<sup>st</sup> choice class is full. You must enter at least three choices for each day you plan on weaving. Not listing three choices may affect your registration.

**Registration is on a first come first served basis for the first 220 registrants and MAY 1, 2018 is the registration deadline.** Registrations received after this date will NOT be able to order tee-shirts. **Absolutely no registrations taken after June 1, 2018.** With your registration, send in separate checks for each of your 1<sup>st</sup> choice classes made out to the teacher of that class. **You must write separate checks for each class. These checks, made out to the teacher of each class, should be dated for June 12, 2018.**

Pay special attention to the **DEADLINE: May 1, 2018. Absolutely NO refunds will be given after this date.** (Special circumstances may be reviewed by the committee.)

Fill out the Registration Form along with Lodging (remember, rooms are limited) and Meal Form and return with payment no later than **MAY 1, 2018.** (No post dated checks for registration, lodging and meals) Room and Meal reservations MUST be made through the Basket Committee and NOT through the Educational Center.

Make registration, lodging and meal checks (no post dated checks for registration, lodging and meals) payable to **Bluegrass Area Basketmakers** mail to:

Carolyn Poe  
102 Stone Cove Dr.  
Paris, KY 40361

### **Lodging and General Information**

Due to the limited number of rooms available we encourage participants to stay as many to a room as possible. Remember you are only in the rooms for a short time. People staying the entire seminar will be given priority on rooming.

If you pay for a quad for all nights but only list 1 or 2 roommates for any of those nights, someone may be assigned to your room. If no one is available to be placed in your room, you will be charged for the double or triple rate (whichever pertains to your situation.) Unfortunately we may not be able to determine this until the start of the seminar. Please bring your checkbook.

All sleeping rooms at the Educational Center have at least one set of bunk beds. Some rooms are furnished with a set of bunk beds and a full sized bed while the rest have two sets of bunk beds. If you and/or some of your roommates cannot safely use the top bunks please consider requesting a double room. Sheets and towels are provided. Please bring your own personal toiletries.

If a handicapped room or first floor room is requested, a physician's statement must accompany the request when you register. **NO ROOM ASSIGNMENTS WILL BE CHANGED AT THE TIME OF THE BASKET SEMINAR.** There is an elevator on the porch to assist participants in reaching the lower levels of the Educational Center.

There are no TVs or phones in the rooms. If you should need to be contacted for an emergency, the number for the Leadership Center is (270) 866-4215. **Remember the Educational Center is on Eastern Daylight Time.**

**Campers** – There is only one charge per night for campers or mobile homes regardless of how many people are staying in it. The hook up for the RVs is **electricity only, no water hook ups.** You have a choice of 30 amps or 50 amps. (Only two 50 amp hook-ups are available and will be assigned on a first come basis.)

Prices for meals and rooming are set by the Educational Center and the University of Kentucky.

Costs of classes are set by each individual teacher. The Bluegrass Area Basketmakers Seminar Committee is a not for profit organization.

### **Check List**

Bring tools such as pencil, measuring tape, sharp scissors, container for water (large enough to hold your reed), spring type clothes pins, sharp knife, awl or screwdriver, extra hand towel, spray bottle, and pliers. Again, pay attention to special tools, if requested by instructor, needed for your basket. If you have difficulty seeing, bring a high density light (Ott Lite) and extension cord.

### **Skill Level Guide**

**Beginner/All Levels:** for those who are learning basic skills and above. Basic skills include start/stop weaving, twining and starting a base.

**Intermediate:** for those who have some experience in start/stop, over/under weaving, twining and setting up a base and doing a basic rim.

**Advanced:** for those who have mastered the basic skills and are ready to try new techniques and/or other creative methods.

**Catalog, registration forms and additional meal information can be found at:**

**[www.babasketmakers.org](http://www.babasketmakers.org)**

If you have any questions, you may call Carolyn Poe at (502)370-5434 or contact the committee by e-mail at [martybob@wrightsrealm.com](mailto:martybob@wrightsrealm.com) or [carolynpocrafts@yahoo.com](mailto:carolynpocrafts@yahoo.com)

---

**TUESDAY**

---

**T-01 Woven Birch Canister 6 hours 1 – 9**



2017 NCBA Convention won 3<sup>rd</sup> place in naturals professional division. Birch is harvested from teacher's property in VT. It is cut for you to weave a 2/2 twill then stitched with waxed linen. Attach to a wooden base, fit your lid add leather tab to finish it off. **Special tools: hammer and tapestry needle. 5 ½ X 13 ½ but sizes will vary.**

**\$79 Intermediate Dona Nazarenko**

---

**T-02 Splash of Bling 8 hours 1 – 11**



Serve your wine or your preferred choice of beverage with just a splash of "bling!" Class will begin by getting your corks dressed (glued) with Swarovski crystals.

You will then move on to a base that has the spokes glued in and weaver- ready. You will be working on triple twine, stack/back weaving and putting the finishing touch on this eye-catching basket with a Gretchen rolled border. **18 X 11 X 6 ½**

**\$75 Intermediate Marilyn Parr**

---

**T-03 Edelweiss 8 hours 1 – 11**



A fun basket for the waxed linen lover! The basket is twined with 7 ply waxed linen and accented with a drop bead foot, double arrow, beaded lip and a simple rim. Linda will demonstrate and teach you her techniques for making the basket including

completing a row, setting up for the next row, color change, shaping, and the braided rim. **Special tools: small embroidery scissors, waxed linen packing tool with pointed tip, tape measure, and a bead tray. A personal light and magnifying glasses may be helpful. 2 ¾ X 1 ¾**

**\$63 Intermediate Linda Scherz Allen**

---

**T-04 Flashy Bowl 4 hours 1 – 5**



This basket is woven over a plastic bowl. Care is taken during weaving so that the bowl can be removed for cleaning. Two different sized spokes and colors are inserted into the wood base to begin this "flashy" looking

basket! Weaving consists of start/stop and 4 rod twining. The weavers are woven in a very specific pattern. Basket is lashed with waxed linen and beads are added during the lashing. Many color combinations will be available. **9 X 5**

**\$35 All Levels Char Caimmaichella**

---

**T-05 Dimi Jo's 6 hours 1 – 9**



Using #4 round reed spokes, students will weave a diminutive size of a Josephine Knot basket. All will receive material to weave 2 baskets, only one will be completed in class. Some color choices at class time. **4 ½ X 3 and 6 ½ X 5**

**\$35 All Levels**  
**T-06 Star Basket**

**Pam Milat**  
**6 hours 1 – 9**



Learn how to weave the classic Star Basket! This basket has 6 points and is woven in natural and dyed reed. Although the base looks complicated, Anne will show you an easy way to weave it. Sides start as a star shape, but round up to a rim that includes dyed rim filler. **11 X 3 ½**

---

**\$62 Intermediate**

**Anne Bowers**

**T-07 Spiced**

**6 hours 1 – 9**



A basket designed to fit on the shelves of a standard cupboard. Mine holds spice bottles, another holds medication. The accent is a wide colorful strip framed by triple twining with three weavers and a step-up at the end. Proper spoke

insertion insures the rounded corners. Lash with waxed polyester cord. **13 ½ X 10 ½ X 5**

---

**\$50 Intermediate**

**Debbie Mrozinski**

**T-08 French Garden Cloche**

**4 hours 1 – 5**



First created by the French to protect young garden plants, the woven cloche is wonderful for our gardens today or for display in our homes. The random weave is fun and easy to do following a few simple rules. Finished off with a turn down border and topped off with a self handle. Students use their own creativity in this pattern of semi-free form weaving. **13 X 15**

**\$38 All Levels**

**Sandy Atkinson**

**T-09 Double Diamond Bench 4 hours 1 – 5**



Diamond design goes with any décor. The seat is woven in a double diamond design, and the underside is woven in a checkerboard pattern; two design weaves in one class. This bench is made 18 inches, the standard height

of most chairs. The pine bench frame comes stained and sealed. A choice of many color combinations to choose from, using either Shaker tape or nylon webbing. Not to be used as a step stool.  
**Special tools: long shank weaving tool or long knitting needle; 3 medium clamps. 30 ¾ X 14 ½ X 18**

---

**\$80 All Levels**

**Steve Atkinson**

**T-10 Tulip For Sandy**

**4 hours 1 – 5**



Begin with a wooden base and insert half natural and half dyed spokes. The center of this basket is start/stop weaving and near the top you will twine with color and learn descending rows to achieve this tulip like

shape. Tuck your spokes and rim with dyed seagrass and wax linen for the perfect finish! A variety of color will be available. **4 X 8**

---

**\$37 All Levels**

**Sharon Klusmann**

**T-11 Mini Easter Basket**

**6 hours 1 – 9**



This basket is perfect for a beginner or one who would like to brush up on Nantucket basket weaving techniques. Students will weave on a class mold, beginning by inserting tapered cane staves

into a cherry base. The basket is woven in a traditional style or in a twill pattern. A cherry rim and handle with bone domes complete the basket. **Tool kit is provided. 4 ½ X 4 ¾ X 2 without handle.**

**\$70 All Levels**

**Ruth Garcia**

**T-12 Chadwicke** **6 hours** **1 – 9**



This basket is created using traditional weaving methods. The base is an open base with a cat head look to it. A hand carved oak handle is used in this basket. The highlight of this basket is the 3 inch strip painted with flowers and garden scenes. Students will spend much of the time getting the shaping so it highlights the painted strip. Come

let's make an heirloom together! **12 X 46 inch circumference**

**\$85 All Levels with prior experience Marilyn Wald**

---

**T-13 Twill Treats** **6 hours** **1 – 9**



The twill treats has 12 Cherokee 1-3-5 twill designs. Each student can select any one design for this class. The base layout will be simplified by starting in a corner and learning a 3/3 twill base. Students will also learn how to use a twill graph. There are 4 levels of weaving making this a good beginner twill,

however, intermediate and experienced weavers will find the more complex designs a satisfying challenge. The pattern includes professional graph for all 12 designs with measurements for 4 baskets. **7 X 7 X 5**

**\$65 Intermediate Laura Lee Zanger**

---

**T-14 How Small Can You Go?** **4 hours** **1 – 5**



This netted basket is constructed of 11/0 Japanese seed beads. Students will be able to complete one two-colored basket in class, and will receive the materials for a second one. A good class for the non-beader, or for something different for a beading veteran. Many color combinations will be available. Teacher will provide battery powered Ott lights for use in class. **½ X 2**

**\$28 All Levels Barb McNally**  
**T-15 Student's Choice 4 hours 1 – 5**



Students should sign up for the number of hours they would like take. Go to the website **www.handmadencbaskets.com** and choose the basket you would like to make. After you get your class confirmations please go to the project signup

page on the website (7<sup>th</sup> button on the left panel) OR go directly to the HNCB Class Project sign up page at **www.handmadencbaskets.com/choose-1-2-3-4-day-classes**

**\$24 plus price of kit All Levels Joni Dee Ross**

---

**T-16 Wooly Pine Tree** **4 hours** **7 - 11**



You can make this 15 inch woolly pine tree in the 4 hours class. You learn to fringe and twirl wool to make 35 branches for your tree. Lots of color choices and fun to make.

**\$27 All Levels Mary Annunziato**

---

**WEDNESDAY**

---

**W-17 Tray of X's** **8 hours** **8 – 5**



A long rectangular tray style basket accented with dyed round reed making X's along the way. The side weaving includes twining and plain weave to give a graceful flair. It has leather side handles. Tips on pattern repeats, placements and shaping make this stunning when displayed. It all comes together with a wax linen rim. Most will finish, some will rim at home.

**\$64 Advanced Dona Nazarenko**



**W-24 Spirit Ribbed Basket**                      **8 hours**                      **8 – 5**



Woven on oval hoops, this new design incorporates stunning accent work. The woven god's eye is very much a challenge. This class is thoroughly taught with concept of the rib weaving, theory, and facts of rib weaving. Woven with black dyed cane, natural cane, and small flat reed, oval/oval, and round reed. May not finish this one in class, but will have the skills and knowledge to finish on your own.

**9 X 4 X 10 with handle**

**\$60 Intermediate/Adv. Sandy Atkinson**

---

**W-25 Diamond Weave**                      **6 hours**                      **8 – 3**



This stool is just the right size to sit next to the family kitchen bar. It is woven in a diamond twill pattern with Shaker tape or nylon webbing. The underside of the seat is woven in a checkerboard so that you learn two weaves on this project. There is a choice of two colors in the design and there will be a wide assortment to choose from. The pine stool comes sanded, stained in a medium to dark wood tones, and ready to weave.

**Special tools: long shank weaving tool, 2 – 4 clamps**  
**Back is 40 inches tall; seat is 28 inches tall, seat 14 X 15 ½**

**\$86 All Levels Steve Atkinson**

---

**W-26 Infinity Swing**                      **6 hours**                      **8 – 3**



Insert dyed and natural spokes into this rectangular wood base basket. The majority of the weaving is traditional start/stop weave. Learn to descend rows to build up the front and back height. Insert a pair of flat topped swing handles and learn this unique chair caned overlay "infinity" design of triple X's in the center. A variety of colors choice will be available. **12 X 13 ½ X 7 ½**

**\$64 Intermediate Sharon Klusmann**  
**W-27 Color Scheme**                      **6 hours**                      **8 – 3**



Students will weave with 140-pound watercolor paper to create a large "cathead" basket. The paper will be printed and pre-cut by the instructor with a variety of colors to choose from. The shaping of the basket will be emphasized. **Tool kit is provided.**  
**7 ½ X 5 ½**

**\$65 Intermediate Ruth Garcia**

---

**W-28 Harmony Hill**                      **8 hours**                      **8 – 5**



Harmony Hill is a replica of an old-fashioned flower gathering basket. The wooden base has a D handle attached. The braid is a rewoven braid giving it the appeal of elegance fit for any garden or garden room. Students will learn braiding techniques, chase weaving, and decreasing weave. The ribbon effect on the basket is created by using different sizes of reed and will be available to students in a variety of colors. **10 X 14 X 6**

**\$50 Intermediate Marilyn Wald**

---

**W-29 Cowee OR Blue Ridge Burden Basket**                      **10 hours**                      **8 – 9pm**



These two baskets are made in the tradition of the Cherokee pack or burden baskets. The design and color represent the Blue Ridge Mountain tops or on the Cowee, four peace pipes facing outward. Students will learn how to change the shape of their basket as it progresses. **Choose one basket. Special tools: mini clips, metal and cloth spoke weights, and small packing tool. Twill experience required.**                      **15 X 12 ½**

**\$90 Intermediate/Adv. Laura Lee Zanger**

**W-30 Rib Basket Pendant**                      **6 hours**                      **8 – 3**



The Rib Basket Pendant is made of 11/0 Japanese delica beads in the odd count peyote stitch. It is then finished with a handmade wire hanger and silken cord for wearing. Color choice for background will be available. Teacher will provide battery powered Ott lights for use in class. **2 X 2**

**\$35 All Levels Barb McNally**

---

**W-31 Student's Choice**                      **8 hours**                      **8 – 5**



Students should sign up for the number of hours they would like to take. Go to the website [www.handmadencaskets.com](http://www.handmadencaskets.com) and choose the basket you would like to make. After you get your class confirmations please go to the project signup page on the website (7<sup>th</sup> button on the left panel) OR go directly to the HNCB Class Project sign up page at [www.handmadencaskets.com/choose-1-2-3-4-day-classes](http://www.handmadencaskets.com/choose-1-2-3-4-day-classes)

**\$48 plus price of kit All Levels Joni Dee Ross**

---

**W-32 Beginner Shaker Boxes**                      **12 hours**                      **8 – 3 Wed**  
**& 8 – 3 Thurs**



This is a beginning level class where the student will build a set of 4 nesting Shaker boxes. Students will apply a finish on their own.

**\$120 Beginner Will Bondurant**

**W-33 Split Stitch**                      **6 hours**                      **1 – 9**



You will be working on your triple twine, shaping, and back weaving to fill in the sections between the wooden spools. Spokes will be glued in and weaver ready. Also, a unique, split leather handle with attached flower medallions will finish your basket. The wood base and leather handle are made by an Amish gentleman. There will be spools already painted for students to use or they may paint their own with paints that will be available for use in class. **12 X 9 X 3 ¼ , 38 circumference**

**\$65 Intermediate Marilyn Parr**

---

**W-34 Spiral Rope Silver Bracelet**                      **4 hours**                      **1 – 3**



Starting with copper rings, students will begin by learning to open and close jump rings seamlessly. When comfortable with the rings, you will switch to the sterling silver rings. In this rope style weave, small jump rings are interlocked in pairs in such a way that they form a spiral twisting along the length of the bracelet. This weave makes a beautiful bracelet. **Special tools: Ott light, 2 pair jewelry chain nose pliers (if you have your own), a magnifier may also help.** **¼ X wrist size**

**\$85 All Levels Char Ciammaichella**





**W-41 Highland Woven Bracelets 2 hours 7 – 9**



The woven bracelet frame comes in a variety of sized to fit all wrists. Weave one of three designs in your color choice of tan, dark green, and wine. Also woven into each bracelet are studs on leather, a unique weaving material. Weaving skills from this class can be used on a basket handle. **1 inch wide X wrist size**

**\$16 All Levels Sandy Atkinson**

---

**THURSDAY**

---

**Th-42 Wooly Pine Tree 4 hours 8 - Noon**



You can make this 15 inch wooly pine tree in the 4 hours class. You learn to fringe and twirl wool to make 35 branches for your tree. Lots of color choices and fun to make.

**\$27 All Levels Mary Annunziato**

---

**Th-43 Circus 6 hours 8 – 3**



Take natural reed spokes and weavers, with assorted dyed reed overlays, then add multi-colored beads to give this round basket a touch of whimsy. Lashing with waxed linen finishes it off nicely. It's as fun to do as it looks. **Special tool: tapestry needle 7 X 8 ½ 34" circumference**

**\$58 Intermediate Dona Nazarenko**

**Th-44 Off The Cuff 8 hours 8 – 5**



This is a large basket that starts on a square wood base and ends up round. Spokes will be glued in and weaver ready. You will work on a variety of skills: twine, triple twine, inserting overlays, stack weave, and shaping. The best part of this basket is the unique “cuff” leather handles that are inserted on the spokes! The “cuffs” are available in several different colors that will match or compliment the dyed reed. **19 X 12 59" circumference**

**\$105 Intermediate Marilyn Parr**

---

**Th-45 Trifecta 8 hours 8 – 5**



Students start on a base with pre-glued spokes. Triple twine with three colors cotton cord in a spiral pattern, then braid weave with soft suede leather, and then triple twine in a stacking pattern with cotton cord. The rim is accented with braided cotton cord and lashed with a twist on a traditional lashings. **Special tools: scissors, spring type clothespins, pencil, spray bottle, small packing tool, knife/tool to scarf rims, and a tapestry needle with a blunt tip. 3 X 5 X 2 ¾**

**\$58 Intermediate Linda Scherz Allen**

---

**Th-46 Ozark Oak Backpack 8 hours 8 – 5**



This backpack with leather straps my newest basket made of white oak trees that I select, cut, and prepare by hand. This oak basket has a **6 X 10** rectangle woven herringbone bottom, a cut-out handle, is double lashed and stands about **13" tall**. It is woven over a mold and everyone should finish in class with a beautiful white oak back pack that will last a lifetime.

**\$125 All Levels**  
**Th-47 Naturally Textured**

**Billy Owens**  
**8 hours 8 – 5**



Basket begins by inserting all natural spokes into a wooden base. Weaving techniques include: a start/stop twill weave using a graph, a 2/1 continuous twill using round reed, start/stop weaving, and 3 rod twining. This is a great techniques basket! You will make your own handle as part of the basket. Using all natural reed with different weaves gives this basket the great textured look.  
**13 X 14 X 10**

**\$83 Intermediate Char Ciammaichella**

---

**Th-48 Currency of the Sea 8 hours 8 – 5**

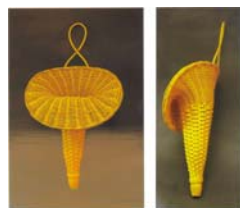


As a sand dollar is being washed ashore by the sea grass waves of the sea, students will use twining and over/under weave to complete this wooden based basket. **Special tool: yarn needle.** **8 ½ X 6 X 8**

**\$56 Intermediate Pam Milat**

---

**Th-49 Antique Flower Basket 8 hours 8 – 5**



This basket is a remake of an old antique flower basket. It starts on a hand turned wood finial and combines the use of both flat and round reed in its construction. The basket is woven from bottom to top in a cone shape, then cuff is turned down – bring your muscles! Anne will have some paint if students would like to paint their basket. **17” tall plus hanger X 13” wide**

**\$85 Advanced Anne Bowers**

**Th-50 Double Diamonds 8 hours 8 – 5**



This large oval hamper basket starts on a wood base with narrowed slot, no need to twine in the spokes. The placement of dyed and natural spokes, weavers, and overlays creates the lovely stacked weaving and dynamic diamond pattern. Keeping the sides straight up this tall basket is the weaving challenge. Bushel handles complete the look. **Special tools: tapestry needle and insta-set purple label glue** **19 X 14 X 23**

**\$90 Intermediate Debbie Mroczenski**

---

**Th-51 Sofa Table Storage Basket 8 hours 8 – 5**



This is a beautifully large basket for storing so many items. Made to fit the bottom shelf of a sofa table, the basket has a filled base and features a fitted lid with open weave. Woven in shades of browns it will fit into any décor. Made with reed, dyed reed, cane, and seagrass. **7 ½ X 22 X 10**

**\$74 Intermediate Sandy Atkinson**

---

**Th-52 4 Point Rag Twill 4 hours 8 – Noon**  
**With Shaker Tape**



The seat of this stool is woven in a 4 rag twill using two colors. You will be learning two patterns as the underside of the seat is done in a checkerboard pattern. A large color variety of Shaker tape and nylon webbing will be brought to class for your selection. The pine stool comes stained, sealed, and ready to weave. Not to be used as a stepping stool. **Special tools: a long shank weaving tool OR a long knitting needle, 4 large clamps.** **14 X 14 X 12**

**\$49 All Levels Steve Atkinson**

**Th-53 Coffee & Cream  
Wastebasket**

**8 hours 8 – 5**



Learn this woven base with cross corner spokes and twining in this smoke and natural reed basket. Along with start/stop weaving you will build up your sides by descending rows in the front and then contrasting descending rows in the corners outlined with twining. Yarn is used to twine and add to the beautiful embellishment. You will receive a premade leather bow and white flower. **10 X 12**

**\$59 Intermediate**

**Sharon Klusmann**

---

**Th-54 Cross Hatch Container**

**6 hours 8 – 3**



This is a small container that can hold Q-tips or any other small items. The container is woven over a class mold where tapered cherry staves have been inserted into the cherry base. Students will weave with Carriage cane and focus on the center design using round reed, #3 cane, a cherry strip, and super-fine Carriage cane. The container is completed with a one piece rim, cover, and knob that are pre-finished. **Tool kit is provided. 3 ¼ X 4 ½ w/cover**

**\$70 All Levels**

**Ruth Garcia**

---

**Th-55 Whisper Mountain**

**8 hours 8 – 5**



This basket is created using traditional weaving methods. A little shaping and a lot of design work complete the basket. There will be several colors from which the weaver may choose. Weavers will make the handles for Whisper Mountain. **10" high X 26" circumference**

**\$55 All Levels w/prior experience**

**Marilyn Wald**

**Th-56 Twill Trays**

**8 hours 8 – 5**



These trays are a Cherokee 1-3-5 twill design in their bases. It is basically a 3/3 twill which allows you to continue the design as you weave the sides. The student will learn how two extra stakes in one direction of the base allow for the stepping up in the sides. Students will choose ONE of six designs to weave in class but kit includes all six graphs. **Special tools: metal spoke weight, alligator clips, and a small packing tool. 11 X 11 X 2**

**\$75 Advanced**

**Laura Lee Zanger**

---

**Th-57 Parade of Baskets Bracelet**

**6 hours 8 – 3**



A parade of baskets to wear on your wrist! This even count peyote stitch project uses 11/0 Japanese delica beads. The bracelet will be finished with sterling silver ball and socket clasp. An easy project for all levels of beaders. Teacher will provide Ott lights for use during class. **5/8 X 6 – 7inches**

**\$36 All Levels**

**Barb McNally**

---

**Th-58 Student Choice**

**8 hours 8 – 5**



Students should sign up for the number of hours they would like take. Go to the website **www.handmadencbaskets.com** and choose the basket you would like to make. After you get your class confirmations please go to the project signup page on the website (7<sup>th</sup> button on the left panel) OR go directly to the HNCB Class Project sign up page at **www.handmadencbaskets.com/choose-1-2-3-4-day-classes**

**\$48 plus price of kit All Levels Joni Dee Ross**

**Th-59 Country Chair  
Shaker Tape Twill**

**4 hours 1 – 5**



A neat country chair, just the right size for adults and children. The seat and back are woven in a basic twill design and the underside of the seat is woven in a checkerboard pattern. There is a choice of 2 colors in the design and instructor will bring a wide assortment from which to choose. The pine chair comes sanded, pre-stained in medium oak or dark

walnut. **Special tools: long shank weaving tool OR knitting needle, 2 medium clamps 13 ½ X 14 ½ back height 29” seat height 18 ½ “**

**\$80 All Levels**

**Steve Atkinson**

---

**FRIDAY**

---

**F-60 Country Carrier II**

**6 hours 8 – 3**



Woven with natural reed you will flare shape this graceful oval basket. Shaping and spacing tips shared. The handle is an oval hoop you will wrap. To protect the bottom

you will add skids. This is a smaller version of my popular larger Country Carrier. **16 X 9 X 3**

**\$52 Intermediate**

**Dona Nazarenko**

**F-61 Potbelly Piggyback**

**10 hours 8 – 9pm**



You will start out with a round wood base, spokes glued in and weaver ready. Our main goal will be shaping the potbelly. I have a couple of tricks up my sleeve that I will pass on to help you achieve this shape. The basket will be finished by adding the unique piggyback handle and the “whirls” at the

top. **52” circumference 20” height**

**\$96 Intermediate**

**F-62 Whiteface**

**Marilyn Parr**

**8 hours 8 – 5**



The basket is twined with 7 ply waxed linen and accented with a magatamas foot and delicate peaks, and complimented with

Linda’s double faced rim. Linda will demonstrate and teach you her techniques for making the basket including completing a row, setting up for the next row, color change, shaping, and the double faced rim.

**Special tools: small scissors and pointed waxed linen packing tool. Magnifying glasses and a personal light may be helpful.**

**2 7/8 X 1 ½**

**\$54 Intermediate**

**Linda Scherz Allen**

---

**F-63 Large and Small  
Nesting Napkins**

**4 hours 8 – Noon**



Get 2 for the price of 1 white oak baskets! I select the white oak trees, cut and prepare the materials by hand using a tool my dad made called a “split-knife.” Both baskets have a herringbone bottom and are woven

over a mold. Everyone should finish in class and have 2 beautiful white oak baskets. **Special tools: sharp scissors, dull butter knife, and a water bucket. Large 7 ½ “ square, small 5 ½” square**

**\$55 All Levels**

**Billy Owens**

---

**F-64 Double Walled  
New Wave Pail**

**8 hours 8 – 5**



Begin by inserting spokes into the slotted wooden base. Inside is woven in a twill pattern with natural reed. The outside basket is woven using paired triple twining, 1/1 pattern continuous weave, Japanese diagonal weave, and a new wave weave with round reed and flat over reed in a 1/3 weave. **10 X 9**

**\$72 Intermediate Char Ciammaichella**  
**F-65 Notty Weaver 6 hours 8 – 3**



After completing a filled woven base, students will corral the “notty” sea grass weavers into their cells, locked up between the bars. This basket offers start/stop weaving, twining, overlays, knot tying and a unique rim technique. **7 X 8 ½ X 7**

**\$42 All Levels Pam Milat**

---

**F-66 Flat Bottomed Egg 8 hours 8 – 5**



This uniquely shaped ribbed basket is a must-do for rib lovers. Students will use a rectangular hoop and a round hoop and dyed/shaped ribs to create this basket. Ribs are dyed to give a pop of color. Weavers are natural. Learn how to weave an “ear,” insert primary and secondary ribs, and make a neat decrease so the basket sets well. Basket may not be

completed in class but students will be able to complete it on their own. **Special tool: sharp knife 13 X 15 X 8**

**\$90 Advanced Anne Bowers**

---

**F-67 Luscious Lattice 10 hours 8 – 9pm**



This BIG basket starts on a custom wood base and attached handle. Large sized weavers and the lattice technique will be your weaving challenge. It was designed to hold two 9 X 13 pans. Includes a divider stand so you can carry a dessert and a hot dish at the same time.

**Specify color: Royal Blue and Black OR Royal Blue and Natural 20 ¾ X 14 ½ X 14 ½**

**\$115 Intermediate Debbie Mrozinski**

**F-68 Old Classic Electric Candle 6 hours 8 – 3**



Woven on a wooden grooved and hole base, the inner candle is woven over a mold with electric light socket and bulb all pre-formed. This part of the candle is woven first over the mold, hiding all electrical parts. The bowl is woven from the grooved base. This is a large

candle for display all year long, but is wonderful for the holidays. Features include twining, bi-spokes, plaiting, braiding, and lashing. Woven with reed, dyed reed, cane, and sea grass. **Bowl 12 ½ X 5 candle 14” high**

**\$60 Intermediate/Adv Sandy Atkinson**

---

**F-69 Rush Footstool 6 hours 8 – 3**



A comfy way to rest those tired feet! Rush design goes with any décor. A basic pattern to learn how to rush, then the technique can be used on any chair. The pine stool comes stained, sealed, and ready to weave. Not to be used as a stepping

stool. **Special tools: HD packing tool, large clamps, and a water bottle. 10 X 10 X 12**

**\$40 All Levels Steve Atkinson**

---

**F-70 Thunder & Lightning 8 hours 8 – 5**



This striking double walled basket begins with a black, grey, and natural twilled base with swirled triple twining. Build up both walls and end with a traditional rim laced with a V design. Learn this rolling overlay pattern on the outside wall with round reed. **5 ½ X 13 ½ X 10**

**\$66 Intermediate Sharon Klusmann**

**F-71 Black and White Nantucket 10 hours 8 – 9pm**



This basket is woven on a class mold with a black hardwood base into which students will insert pre-tapered reed staves. Students will weave with black Hamburg cane and several rows of double-weave into their design. The basket is finished with a reed rim and lashed with black Hamburg cane. The maple handle is wrapped with black cane in a design and is accented with ebony knobs and ivory plugs. **Tool kit is provided. 6 ½ X 9 w/handle**

**\$115 Intermediate Ruth Garcia**

---

**F-72 Tri Pointe 6 hours 8 – 3**



There will be 3 baskets made in class, each with a wooden base. A wooden dowel between each set of spools makes the basket sturdier. Students will accomplish as much as possible in class but may not finish. Sufficient instructions will be given if not completed in class. Assembly and shaping are the key to a successful set of baskets. **Small 19” circumference; medium 27” circumference; large 33” circumference**

**\$75 All Levels w/prior experience Marilyn Wald**

---

**F-73 Large Choctaw Diagonal Basket w/Antique Base 10 hours 8 – 9pm**



This large cane basket begins with a very unique and antique twill base. Its number rhythm is unlike any other, transitions into a diagonal weave and has a wrapped rim and handle. You will be weaving with binder cane that closely resembles river cane and will age into a beautiful honey color. **Special tools: clothespins, metal and cloth spoke weights, and a small packing tool. Twill experience required. 11 X 15**

**\$100 Advanced  
F-74 Baskets Pin**

**Laura Lee Zanger  
6 hours 8 – 3**



Wear your passion on your shirt. Pin is stitched in odd count peyote using 11/0 Japanese delica beads. The beaded panel will be stitched to a 3-inch silver kilt pin upon completion. It looks difficult, but isn't. A good project for the beginning beader. Teacher will provide Ott lights for use during class. **2 X 2**

**\$32 All Levels Barb McNally**

---

**F-75 Student Choice 8 hours 8 – 5**



Students should sign up for the number of hours they would like take. Go to the website **www.handmadencbaskets.com** and choose the basket you would like to make. After you get your class confirmations please go to the project signup page on the website (7<sup>th</sup> button on the left panel) OR go directly to the HNCB Class Project sign up page at **www.handmadencbaskets.com/choose-1-2-3-4-day-classes**

**\$48 plus price of kit All Levels Joni Dee Ross**

---

**F-76 Crown Shaker Boxes 12 hours 8 – 3 Fri & 8 – 3 Sat**



Students will complete a set of 3 CROWN boxes. These are not generally well know but were used by some of the Northern Shakers. These are open top boxes using cherry sides, pine bottoms, and a maple band. **Previous Shaker box experience helpful but not required. Large: 9 ½ X 3 ½ Medium: 8 ¼ X 3 3/8 Small: 7 X 3 ¼**

**\$110 Intermediate**

**Will Bondurant**

**F-77 Large Casserole 4 hours 1 – 5**



A traditional Ozark style basket made from white oak trees harvested and prepared by teacher using a handmade split-knife made by his father. It has a rectangular woven herringbone bottom and a solid oak handle. Basket is woven over a mold and everyone

should finish in class with a beautiful casserole carrier that will last a lifetime. **Special tools: sharp scissors, a dull butter knife, and water bucket** 9 ½ X 18 X 4 ½

**\$75 All Levels Billy Owens**

---

**F-78 Woven Note 4 hours 3:15 – 9:15**



This project provides a great opportunity to learn or practice the “wretched” Gretchen border around a small chalkboard. Students will have color choices of #1 round reed and will finish with either a magnet or jute hanger backing. **If specific color(s) is**

**desired (i.e. school or team colors), please specify prior to class but after class assignments. mspam\_gs@yahoo.com** 6 ½ X 8 ½

**\$21 All Levels Pam Milat**

---

**F-79 Yellowstone 4 hours 3:15 – 9:15**



This tote with a single swing handle is woven with yellow, light and dark brown dyed and natural reeds. The base of the basket is completely filled in so nothing will fall out of the bottom. The added twine design with round reed is on both the front and back of the basket. On the front side are graduated yellow jewels to add the special glitz! 10 X 5 X 9 ¾

**\$60 All Levels Sandy Atkinson**

**F-80 Mini Plaited Cedar 2 hours 7 – 9**



Cedar was harvested by teacher while in Alaska. My woven birch decorations are similar but methods are completely different. This little miniature gem comes with a mold to hold all in place as you weave. It has a lid and can be hung by a leather cord. Uniquely yours! All will be different. **1 X 2 Circumference 3 ¼”**

**\$20 All Levels Dona Nazarenko**

---

**SATURDAY**

---

**S-81 Weave A Keepsake II 6 hours 8 – 3**



The student is the designer! You are given the horizontal and vertical spokes, some dyed and some natural, then you choose where you would like them to go. Or you can use my pattern. For all who like a challenge of patterns, shaping, and handle placement. A great basket for the kitchen, garden or craft room. 20 X 11 X 4 ½

**\$66 Intermediate Dona Nazarenko**

---

**S-82 Blossom 8 hours 8 – 5**



Twine a simple pattern with three colors of waxed linen. The magatamas beads in the center and outer edges create a blossom like piece. The second side has a simple pattern without beads.

To complete the two sides are put together with a new technique Linda created for this piece. Select colors and beads for different combinations will be available. **Special tools: small embroidery scissors, bead tray, waxed linen packing tool with pointed tip, and tape measure. A personal light and magnifying glasses may be helpful.** 2 ½” diameter



**\$48 Intermediate Linda Scherz Allen**  
**S-83 Christmas Tree Collar 8 hours 8 – 5**



This will be a Christmas heirloom! Spokes will be glued in and weaver-ready on a unique, Amish made base. Bring measurements of personal tree stand so collar can be woven to fit. Use of overlays makes the design. We will also work with triple twine and learn how to reinforce and make a sturdy rim. **29 X 9 circumference 92”**

**\$118 Intermediate Marilyn Parr**

---

**S-84 Large Laundry 8 hours 8 – 5**



This is the largest and best selling basket Billy makes. It is made from white oak trees harvested and prepared by Billy using a handmade split-knife made by his father. This basket has a “working” bottom and two bushel handles. It is woven over a mold and everyone should finish in class and leave with a beautiful white oak basket that will last a lifetime. **Special tools: sharp scissors, a dull butter knife, and water bucket 18 X 18**

**\$105 All Levels Billy Owens**

---

**S-85 Funfetti 6 hours 8 – 3**



This colorful basket is started by inserting spokes into a wooden base. Colorful spoke overlays are added after weaving a paired 3-rod arrow using 3 different colors of round reed. The majority is woven in a continuous under 1, over 1 weave. After the basket is woven, more overlays are added to accent the swirl on the sides of the basket. **8 X 12 X 7**

**\$52 All Levels Char Ciammaichella**

**S-86 Bow On The Wall 4 hours 8 – Noon**



This is a beginning level basket featuring over/under weaving, twining, overlays, and making a bow of reed. Students will have color choices at classtime. **4 ½ X 5 ½ w/o handle**

**\$20 All Levels Pam Milat**

---

**S-87 Twin Hammocks 8 hours 8 – 5**



This class will start with a piece of rhododendron drilled with primary ribs. (this will be demonstrated in class) Students will learn how to start the weaving, add secondary ribs, and shape/plane the ribs. Emphasis on changing materials, and there will be a very wide variety of materials from which to choose. Weaving through the intersection of the 2 baskets is easy, with Anne by your side! **Special tool: sharp knife Approx. 24 X 15 sizes vary**

**\$90 Advanced Anne Bowers**

---

**S-87B Tapestry Weave 6 hours 8 – 3**



This is a unique vase-shaped basket that has a wooden base and a plastic liner that stays inside the basket upon completion so it can hold water like a vase. Students will weave with waxed linen, cane, a wide variety of chenille yarns, and copper wire. A unique rim completes the basket. These are fun to make! **2 ½ X 8**

**\$60 Intermediate Anne Bowers**

**S-88 Cascade 4 hours 8 – Noon**



This is another in my series of swirl-based baskets, a technique that covers a drilled wood base with swirled spokes. Catch the twist both in the start and in the finish. This design takes the spokes on a journey from the base to the lacey rim, finishing with a gentle cascade as they find their way back to home base. **Special tool: awl 9 ½ X 8 X 5 ½**

**\$35 All Levels Debbie Mroczenski**

---

**S-89 Lidded Lunch Tote 6 hours 8 – 3**



Just the right size – lunch for two! This can also be a small storage basket. Double over-lay base is also used on the fitted lid. Swing handle makes it easy to get inside the basket and triple twine or four rod wale accents. Also included is the scarf liner. Designs may vary. Woven in shades of dyed brown, smoked, and natural reed and lashed with cane. **9 ¾ X 8 w/o handle (with handle 13”)**

**\$55 Intermediate Sandy Atkinson**

---

**S-90 Youth Arm Chair 6 hours 8 – 3**



This chair is designed for older kids, approximately ages 6 – 11, but still not for adults. In class the student can choose from a great color selection of Shaker tape and /or nylon webbing. Learn two weaves on the chair (one on top and one under the seat, but either can be used on top of seat as you prefer) The armed pine chair comes stained, varnished and ready to weave. Not to be used as a stepping stool. **Special tools: long shank weaving tool OR long knitting needle; HD packing tool; large clamps. 15 X 14 X 16 chair back 30”**

**\$80 All Levels Steve Atkinson**

**S-91 Mackenzie 8 hours 8 – 5**



Learn to create an elegant cat head woven base and overlay center with color. The majority of this basket is start/stop weaving, 4-rod wale in pairs, and descending rows. Braid strips of leather for your rim filler and embellish with matching pre-made leather flower. A variety of colors will be available. **11 X 10**

**\$67 Intermediate Sharon Klusmann**

---

**S-92 Butterflies to Flowers 8 hours 8 – 5**



Students will learn techniques and shaping while weaving their small paper “cathead.” The instructor will provide a variety of painted and pre-cut paper. After the basket is woven, paper will be applied in an easy decoupage method to create a hand-painted look. There are many patterns from which to choose. **Tool kit is provided. 4 ¾ X 4 ¼**

**\$ 50 Intermediate Ruth Garcia**

---

**S-93 Wicker Turtle 6 hours 8 – 3**



This whimsical turtle has a shell-shaped basket that can actually be used. The two-step braids at the bottom and top create the shell form with simple twining dominating the base and sides of the basket. A head is woven separately. Beads are woven on for eyes. Wooden ball feet raise the shell so the head dips down. A seat weaving packing wedge is inserted for the turtle’s tail. **Special tool: cloth spoke weight. 8 X 5 X 10 w/head and tail**

**\$60 All Levels Laura Lee Zanger**

**S-93B Sophia's Dream Catcher 4 hours 8 – Noon**



The dream catcher is fun to make. The wrapping of your hoop will be pre-started. The web is basic weaving of over-under-around-and through. Each kit has a spider charm representing the first weaver, and also some feathers and beads for embellishment. There will be a variety of kit colors from which the students may choose at class time. Let's weave and have good dreams. **Special tools: 8 wooden clothes pins 8 diameter X 12 – 14" long**

**\$60 All Levels Laura Lee Zanger**

---

**S-94 Tumbling Baskets Bracelet 6 hours 8 – 3**



Show your love of baskets on your wrist! This bracelet is done in even count peyote with 11/0 Japanese delica beads, and finished with sterling silver crimp bars and a sterling silver ball and socket clasp. A good project for beginning beaders. Teacher will provide battery powered Ott lights for use in class. **1/2" X 6"-7"**

**\$30 All Levels Barb McNally**

---

**S-95 Student's Choice 4 hours 8 - Noon**



Students should sign up for the number of hours they would like take. Go to the website **www.handmadencbaskets.com** and choose the basket you would like to make. After you get your class confirmations please go to the project signup page on the website (7<sup>th</sup> button on the left panel) OR go directly to the HNCB Class Project sign up page at **www.handmadencbaskets.com/choose-1-2-3-4-day-classes**

**\$24 plus price of kit All Levels Joni Dee Ross**

**S-96 Chains 4 hours 1 – 5**



This basket is all about the rim. Round reed spokes are inserted into a slotted wooden base. Weaving is on a class mold for a perfect shape and a quick weave to the top. With plenty of time to spend on the rim, you will be able to concentrate on the technique that give you the wonderful interlocking chain weave. Intriguing! **6 X 4 1/2**

**\$35 Intermediate Debbie Mroczenski**

---

**S- 97 Wooly Pine Tree 4 hours Noon – 5**



You can make this 15 inch wooly pine tree in the 4 hours class. You learn to fringe and twirl wool to make 35 branches for your tree. Lots of color choices and fun to make.

**\$27 All Levels Mary Annunziato**

## 2018 Teachers

**Mary Annunziato** – photo and bio unavailable

**Linda Scherz Allen** – photo and bio unavailable

**Sandy Atkinson** – Sandy began weaving in 1983 when she was home with her four daughters. In 1985 she and her husband Steve opened Atkinson's Country House, where she could teach basket weaving and sell supplies. The success of the business grew into a nationwide mail order company. Steve and Sandy continue to work at the basket studio in Lennon, Michigan.



They live on a small farm, have eight grandchildren and love to travel around the USA in the motor home teaching at conventions. She has taught in Michigan, Indiana, Ohio, Oklahoma, North Carolina, South Carolina, Illinois, Wisconsin, Minnesota, New York, Missouri, Georgia, Arkansas, Pennsylvania, Texas Tennessee, Kentucky, and Connecticut

**Steve Atkinson** – Steve worked for GM for 34 years. He retired in 2000 and joined his wife Sandy at Atkinson's Country House full time. He is in charge of packing and shipping, plus anything else that needs doing. Steve also took up woodcutting and now cuts most of the woodwork for the shop. He builds his own stools, rockers, and chairs. He also enjoys the seat weaving classes. Steve coached high school sports for 34 years. Although his favorite sport is football, he has coached boys and girls basketball, volleyball, baseball, and softball. Steve and Sandy continue to work at the basket studio in Lennon, Michigan. They live on a small farm, have eight grandchildren and love to travel in the motor home teaching around the USA.



**Will Bondurant** – Will has been building Shaker boxes and teaching classes for about 12 years. He builds and teaches as near to the traditional Shaker way as possible. Will truly enjoys the simplicity of the Shaker style. Shaker boxes make excellent keepsakes and treasured gifts. All of Will's boxes are made of beautiful cherry wood.



**Anne Bowers** - Anne is from the eastern panhandle of West Virginia where she works in her studio designing and teaching baskets. She was a production basket maker for many years and she brings those skills into each basket that she teaches. Ribbed basketry is her specialty, and some of her baskets have taken on a sculptural perspective in recent years. Anne has participated in many basketry exhibits, has received an award from Tamarack for being outstanding in the skills of basketry and has won many awards for her work. She is an active member of the National Basketry Organization. She has taught on 3 basketry cruises, teaches basketry widely and lectures about the woven form. Anne is in her 35<sup>th</sup> year of weaving and is still fascinated with the woven form. She recently participated in her 27<sup>th</sup> year of Jefferson County, WV's annual Over the Mountain Studio Tour. Her goal is to make each student's class a successful one.



**Char Ciammaichella** – Char has been weaving for over 20 years and teaching for the last 13 years. She weaves mainly with reed and loves playing with color placement to get many different and interesting patterns. She teaches at home, at guild gatherings, and many weaving conventions. She loves teaching and passing down weaving techniques to all and is constantly trying new techniques and ideas! She has been the coordinator for Winter Weave Conference the last 18 years.



**Ruth Garcia** – (photo unavailable) Ruth is from Rhode Island, has been weaving for over twenty years, and is fond of the Nantucket tradition of basket weaving. Her creations have won numerous awards and have been accepted into juried exhibits. She has won the 2011 ABM convention exhibit for best Nantucket Style and both NCBA 2012 first and second place in the profession category. Ruth was also the recipient of third place in the mold woven category at the NCBA 2016 convention. Along with her Nantucket basketwork, she has received recognition for your paper basket creations. At the 2017 NBG convention, Ruth won first place for her paper fish bowl. Designing and developing new techniques, she also loves to teach and has taught at many quilts.

**Sharon Klusmann** - Sharon has been weaving, designing and teaching basketry for over 25 years. Her website: [www.sharonklusmann.com](http://www.sharonklusmann.com) features seven pages of her original designs. She not only teaches basketry from her home studio in Tallmadge, OH but at national conventions and guilds throughout the country. She has had three of her designs featured in Create and Decorate Magazine and is also the author of “Business in a Basket” to help others who love basket weaving turn their passion into a successful teaching business.



**Barb McNally** –My beading obsession began when I was in junior high school with a purchase of some seed beads from the local Ben Franklin craft store. I started stringing “love beads,” then moved onto bead weaving. The beading took a back seat when I started weaving baskets, but soon came back with a vengeance. My work room now overflows with basket reed, handles, delica beads, and too many beading books.



**Pam Milat** – Pam has been weaving baskets for 12 years and due to a heavy work schedule only able to teach on and off. She was born and raised in the Midwest where she grew up designing, creating, and painting in multi-medias from an early age. After a 16 year stint in Central Florida, she moved to North Carolina and got bit by the “basket bug” in 2004. Pam has served several terms as president of the Port City Basketmakers, Wilmington, NC. In addition to baskets she currently loves to crochet, cook, read, and dabble in many other crafty things. Now retired, Pam is looking forward to sharing and teaching her love for heirloom crafts.



**Debbie Mroczenski** – Debbie started weaving in 1992 at a PTO meeting. She has shared her skills with family and friends and has taught 4-H. She has taught at East Troy Basketry in Wisconsin, in Canada, Kentucky, Michigan, Minnesota, and Missouri. In 2014 she won first place in the professional/teacher category at the Michigan convention. In 2016 Debbie got third place in Missouri. Debbie was born and raised in Waukesha, WI and has been married to Roger for 37 years. She is blessed to have three children and five grandchildren. She enjoys all types of weaving and finds it is a wonderful way to unwind and relax. Debbie is looking forward to meeting and sharing her designs with all of you.



**Dona Nazarenko** - (photo unavailable) Dona wants to help the fellow basket maker to have fun. She wants them to leave her class having learned her techniques and methods that she has found helpful over the years. Weaving since 1988 Dona started teaching classes in 1992 throughout NJ at school campuses, local basketry guilds, and at various galleries. Wining numerous awards for her work, she also has been recognized on local TV, in newspapers, magazines, and articles in several basketry newsletters. Not slowing down since moving to Tunbridge, VT in 1996 she has continued to teach classes across the country and holds classes in her quiet and secluded "Country Spirit Basket" studio with husband Warren. Dona does not focus on one style of basketry or one medium. She also enjoys the gifts of nature which she shares with students, one being utilizing birch bark. Warren and Dona both can be seen harvesting birch bark on their property. Dona is credited for teaching over 85 birch bark designs and more than 135 reed basket designs. Dona was awarded first place in reed basketry and third place in naturals at the 2017 NCBA convention.

**Billy Owens** - Billy is the second generation of the "Owens" white oak basket makers. His dad, Dale Owens, was self-taught and the first basket maker in the family. Billy's wife, Theresa, helps with the weaving as do the children and grandchildren (third and fourth generations.) *Owens Oak Baskets* has been around for over 30 years in the Ozarks of Southwestern Missouri. All the material used in their baskets is made from timber grown in the Ozarks, which Billy selects, cuts and prepares by hand using a homemade hand tool which was made by his dad, called a "split knife." Billy has taught at conventions and workshops all over the USA. In his classes he enjoys sharing everything about the white oak, from selecting the right tree to how he prepares the material for weaving. It is his goal when he teaches, first and foremost, that everyone leaves with a finished basket they can be proud of and that they had a fun time learning about the white oak basket making. He wants to ensure the tradition of Ozark White Oak Basketry lives on.



**Marilyn Parr** – Marilyn has been teaching for over 35 years. She started out taking classes through the Community Education Program and then later taught those classes to others. Marilyn has attended conventions as a student almost as long as she has been a weaver. For the past 5 years her ambition has been the designing of beautiful baskets. She also has a passion for quilting and hunting and she uses both in her basket designs. Marilyn tries to design baskets that are both beautiful and functional.



**Joni Dee and David Ross** – Joni Dee and David grew up in Aiken County, South Carolina, met in junior high school and has been "going steady" since 1970. They have traveled extensively and have lived in GA, CA, DE and NC. Both are graduates of Clemson University.



When Joni Dee wove her first basket in 1989, she discovered the perfect expression of her exuberant optimism and joy in life. Then living in Rocky Mount, in 1991 she founded Handmade North Carolina Baskets. Joni Dee has earned a degree in Education and has written and published over 80 basket patterns. She particularly enjoys designing and weaving custom Nantucket baskets to fulfill the wishes and desires of her clients. David is an experienced woodworker as well as a PhD in Biology. His grandfather inspired him in woodcraft and to become a self-taught woodworker and wood turner. Since retiring from agribusiness in 2013, he has become a full partner in Handmade North Carolina Baskets. He produces many of the hardwood components for their business and a wide variety of turned wood items and custom furniture. In addition to weaving and teaching classes in their Summerfield studio, Joni Dee and David regularly conduct workshops at conventions, private guilds and art centers throughout the United States. Their daughter Lindsey-Dee helps with the business end of things and son Craig has now joined the business in the wood shop. Three grandchildren and their dog are constant sources of delight and inspiration. Teacher contact information: [hncbjdr@icloud.com](mailto:hncbjdr@icloud.com)

**Marilyn Wald** - Owner of XYZ Basket Works, Marilyn has been weaving since 1988 and began teaching in 1989 with two students. XYZ Basket Works was formed in 1992. Marilyn has taught at conventions, guild and workshops around the US and Canada. Marilyn has been featured in Basket Bits Magazine and Just Patterns. The students make teaching basketry special for her. It is rewarding to see the look of a weaver as he or she completes their basket.



**Laura Lee Zanger** - Laura Lee has been designing baskets and writing patterns since October 2000. She has been teaching on the basketry convention circuit since 2002 and enjoys expressing her creativity in Cherokee, Choctaw and Chitimacha twill designs. She travels the country teaching Southeastern Native American twill techniques and shares her excitement and enthusiasm for weaving with everyone she encounters while maintaining the fascination of a child with every new idea, lesson and experience. Laura Lee has also written basketry poems, instructional books, and a novel. Her goal is to enlighten everyone on the thrill of twill, weaving in the Southeastern Native American Tradition of the single and double woven baskets. She is working with Caddo Mounds State Historic Site in Alto, TX where she makes mats and baskets for their Interpretive Center and Gift Shop. She also does presentations and teaches weaving for their special events.



## INDEX OF CLASSES BY TEACHER

### Linda Scherz Allen

T-03	Edelweiss	8 hours	Intermediate
W-19	Confetti	10 hours	Intermediate
Th-45	Trifecta	8 hours	Intermediate
F-62	Whiteface	8 hours	Intermediate
S-83	Blossom	8 hours	Intermediate

### Mary Annunziato

T-16	Wooly Pine Tree	4 hours	All Levels
Th-42	Wooly Pine Tree	4 hours	All Levels
S-97	Wooly Pine Tree	4 hours	All Levels

### Sandy Atkinson

T-08	French Garden Cloche	4 hours	All Levels
W-24	Spirit Ribbed Basket	8 hours	Intermediate/Adv
W-41	Highland Bracelets	2 hours	All Levels
Th-51	Sofa Table Storage	8 hours	Intermediate
F-68	Old Classic Candle	6 hours	Intermediate/Adv
F-79	Yellowstone	4 hours	All Levels
S-89	Lidded Lunch Tote	6 hours	Intermediate

### Steve Atkinson

T-09	Bench	4 hours	All Levels
W-25	Bar Stool	6 hours	All Levels
W-36	Twill Footstool	2 hours	All Levels
Th-52	4 Point Rag Twill	4 hours	All Levels
Th-59	Country Chair	4 hours	All Levels
F-69	Rush Footstool	6 hours	All Levels
S-90	Youth Arm Chair	6 hours	All Levels

### Will Bondurant

W-32	Shaker Boxes	12 hours	All Levels
F-76	Crown Shaker Boxes	12 hours	Intermediate

**Anne Bowers**

T-06	Star Basket	6 hours	Intermediate
W-22	Mint Chocolate Chip	6 hours	Intermediate
W-35	Woven Bracelets	2 hours	All Levels
W-39	Woven Bracelets	2 hours	All Levels
Th-49	Antique Flower Basket	8 hours	Advanced
F-66	Flat Bottom Egg	8 hours	Advanced
S-87	Twin Hammocks	8 hours	Advanced
S-87B	Woven Tapestry	6 hours	Intermediate

**Char Ciammaichella**

T-04	Flashy Bowl	4 hours	All Levels
W-20	Byzantine Bracelet	4 hours	All Levels
W-34	Spiral Rope Bracelet	4 hours	All Levels
Th-47	Naturally Textured	8 hours	Intermediate
F-64	Double Wall Pail	8 hours	Intermediate
S-85	Funfetti	6 hours	All Levels

**Ruth Garcia**

T-11	Mini Easter Basket	6 hours	All Levels
W-27	Color Scheme	6 hours	Intermediate
Th-54	Cross Hatch Container	6 hours	All Levels
F-71	B & W Nantucket	10 hours	Intermediate
S-92	Butterflies to Flowers	8 hours	Intermediate

**Sharon Klusmann**

T-10	Tulip for Sandy	4 hours	All Levels
W-26	Infinity Swing	6 hours	Intermediate
W-37	Frosty	4 hours	All Levels
Th-53	Coffee & Cream	8 hours	Intermediate
F-70	Thunder & Lightning	8 hours	Intermediate
S-91	Mackenzie	8 hours	Intermediate

**Barb McNally**

T-14	How Small Can You	4 hours	All Levels
W-30	Rib Basket Pendant	6 hours	All Levels
Th-57	Parade of Baskets	6 hours	All Levels
F-74	Baskets Pin	6 hours	All Levels
S-94	Baskets Bracelet	6 hours	All Levels

**Pam Milat**

T-05	Dimi Jo's	6 hours	All Levels
W-21	Keep It Simple	10 hours	Intermediate
Th-48	Currency of the Sea	8 hours	Intermediate
F-65	Notty Weaver	6 hours	All Levels
F-78	Woven Note	4 hours	All Levels
S-86	Bow on the Wall	4 hours	All Levels

**Debbie Mroczenski**

T-07	Spiced	6 hours	Intermediate
W-23	Stacked	8 hours	All Levels
W-40	Critter Cradle	2 hours	All Levels
Th-50	Double Diamond	8 hours	Intermediate
F-67	Luscious Lattice	10 hours	Intermediate
S-88	Cascade	4 hours	All Levels
S-96	Chains	4 hours	Intermediate

**Dona Nazarenko**

T-01	Birch Canister	6 hours	Intermediate
W-17	Tray of Xs	8 hours	Advanced
W-38	Mini Penobscot	2 hours	All Levels
Th-43	Circus	6 hours	Intermediate
F-60	Country Carrier II	6 hours	Intermediate
F-80	Mini Plaited Cedar	2 hours	All Levels
S-81	Weave A Keepsake	6 hours	Intermediate



### **Billy Owens**

Th-46	Oak Backpack	8 hours	All Levels
F-63	Nesting Napkins	4 hours	All Levels
F-77	Large Casserole	4 hours	All Levels
S-84	Large Laundry	8 hours	All Levels

### **Marilyn Parr**

T-02	Splash of Bling	8 hours	Intermediate
W-18	Large Antler Jewelry	4 hours	All Levels
W-33	Split Stitch	6 hours	All Levels
Th-44	Off The Cuff	8 hours	Intermediate
F-61	Potbelly Piggyback	10 hours	Intermediate
S-82	Christmas Tree Collar	8 hours	Intermediate

### **Joni Dee Ross**

T-15	Student Choice	4 hours	All Levels
W-31	Student Choice	8 hours	All Levels
Th-58	Student Choice	8 hours	All Levels
F-75	Student Choice	8 hours	All Levels
S-95	Student Choice	4 hours	All Levels

### **Marilyn Wald**

T-12	Chadwicke	6 hours	All Levels w/prior
W-28	Harmony Hill	8 hours	Intermediate
Th-55	Whisper Mountain	8 hours	All Levels w/prior
F-72	Tri-Pointe	6 hours	All Levels w/prior

### **Laura Lee Zanger**

T-13	Twill Treats	6 hours	Intermediate
W-29	Burden Baskets	10 hours	Intermediate/Adv
Th-56	Twill Tray Trio	8 hours	Advanced
F-73	Choctaw Diagonal	10 hours	Advanced
S-93	Wicker Turtle	6 hours	All Levels
S-93B	Dream Catcher	4 hours	All Levels

### **Additional Lodging**

Additional lodging is available in the Somerset area. If you desire to stay at a hotel/motel or if all rooms at the Leadership Center are full, it is your responsibility to make your own reservations and provide your own transportation to the seminar.

Comfort Inn (606) 677-1500, 82 Jolin Drive, Somerset

Cumberland Lodge (270) 866-4208, 720 N. Hwy. 127, S. Russell Springs

Days Inn (606) 678-2052, 125 N. Hwy 27, Somerset

Hampton Inn (606) 676-8855, 4141 S. Hwy. 27, Somerset

Holiday Inn Express (606)425-4444, 50 Stevie Lynn Drive, Somerset

Springs Motel (270) 866-5066, 108 Steve Wariner Drive, Russell Springs

Super 8 Motel (606) 679-9279, 601 S. Hwy. 27, Somerset

**Make plans now to attend:**

**24<sup>th</sup> Annual**

**Bluegrass Area Basketmakers Seminar**

**June 11 - 15, 2019**